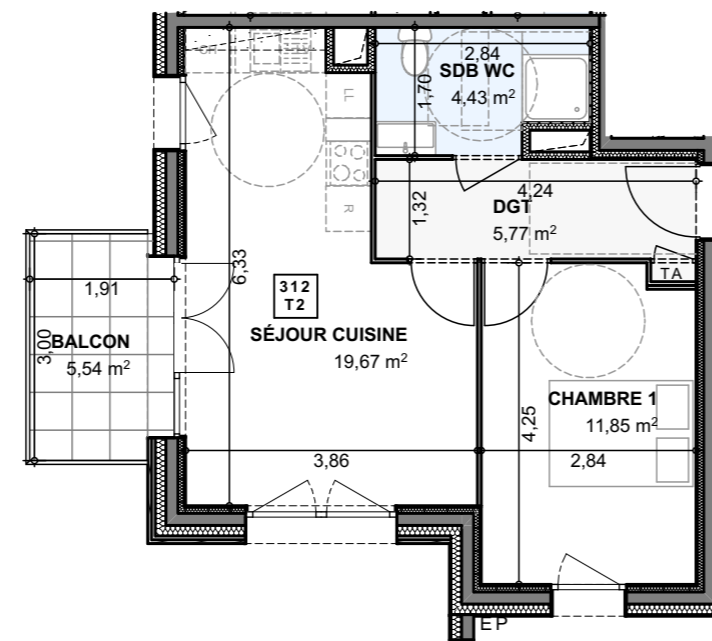
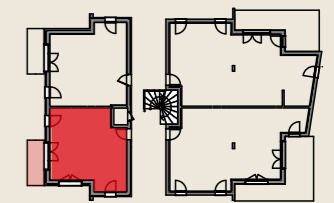
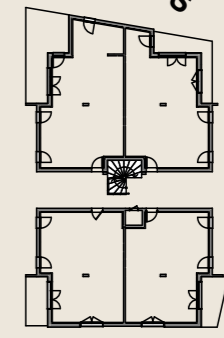


LES HAUTS DU LAC
à ANTHY SUR LEMAN

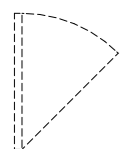


LES NOUVEAUX CONSTRUCTEURS
CONCEVONS VOTRE ESPACE DE VIE

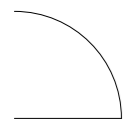


LOG 312 : 2 PIÈCES NIVEAU 1

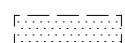
SÉJOUR CUISINE	19,67
CHAMBRE 1	11,85
SDB WC	4,43
DGT	5,77
SURFACE HABITABLE	41,72 m²
BALCON	5,54



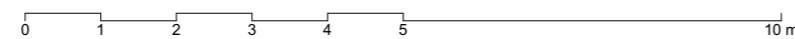
Fenêtre



Porte-fenêtre



Hauteur sous faux-plafond



Le 09/10/2018