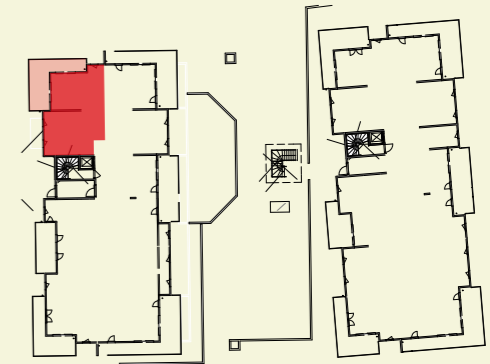


LES TERRASSES
DU LAC

à Sevrier



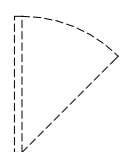
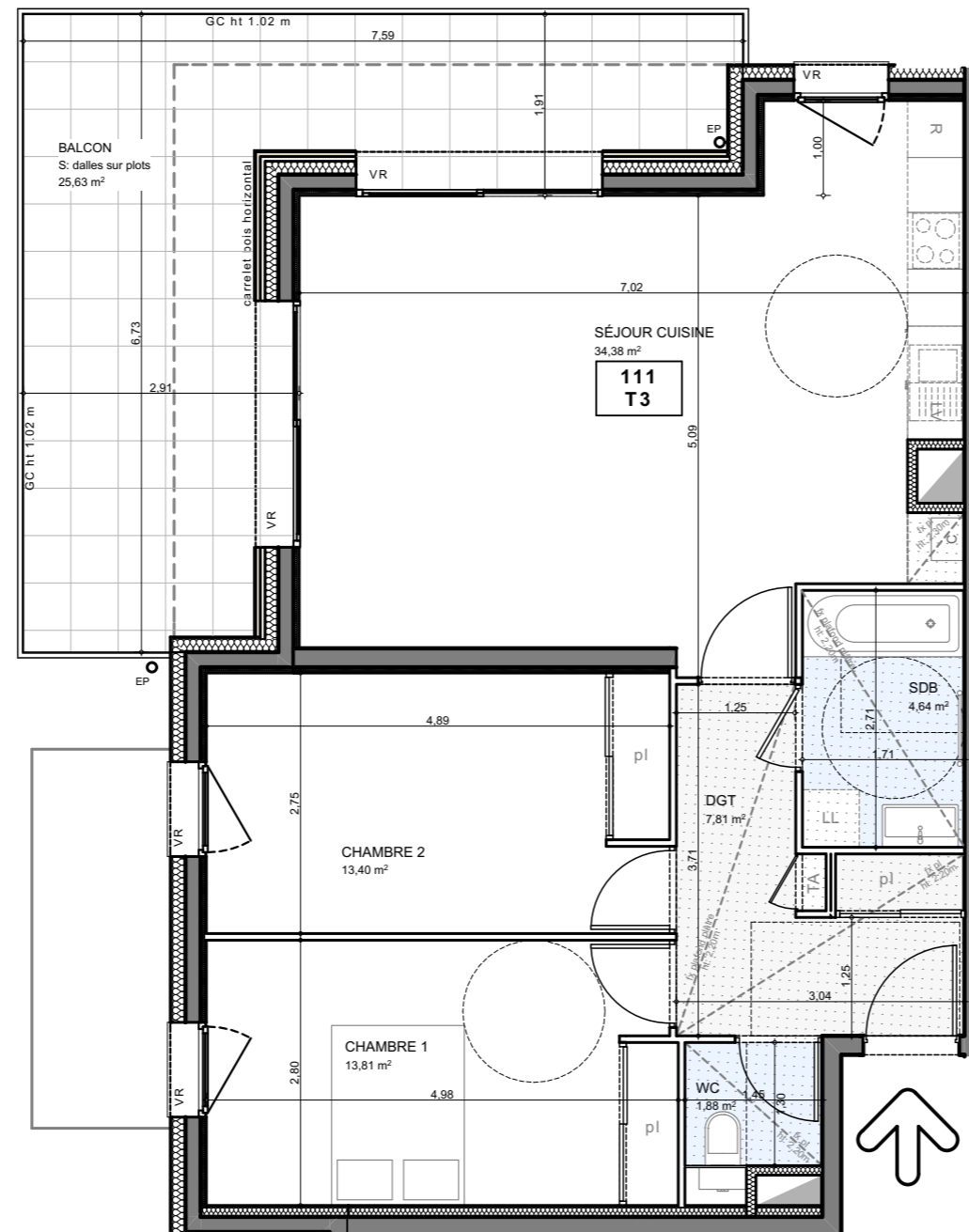
LES NOUVEAUX CONSTRUCTEURS
CONCEVONS VOTRE ESPACE DE VIE



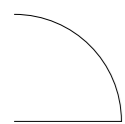
LOG 111 : 3 PIÈCES NIVEAU 1

CHAMBRE 1	13,81
CHAMBRE 2	13,40
DGT	7,81
SDB	4,64
SÉJOUR CUISINE	34,38
WC	1,88
SURFACE HABITABLE	75,92 m²

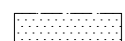
BALCON	25,63
---------------	--------------



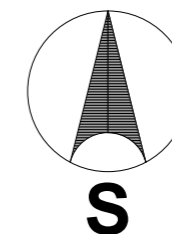
Fenêtre



Porte-fenêtre



Hauteur sous faux-plafond



Le 08/02/2019